

ATRN Antibody (N-term)
Purified Rabbit Polyclonal Antibody (Pab)
Catalog # AP20826a**Specification**

ATRN Antibody (N-term) - Product Information

Application	WB,E
Primary Accession	075882
Reactivity	Human
Host	Rabbit
Clonality	Polyclonal
Isotype	Rabbit IgG
Calculated MW	158537

ATRN Antibody (N-term) - Additional Information**Gene ID** 8455**Other Names**

Attractin, DPPT-L, Mahogany homolog, ATRN, KIAA0548, MGCA

Target/Specificity

This ATRN antibody is generated from a rabbit immunized with a KLH conjugated synthetic peptide between 32-66 amino acids from the N-terminal region of human ATRN.

Dilution

WB~~1:1000

E~~Use at an assay dependent concentration.

Format

Purified polyclonal antibody supplied in PBS with 0.09% (W/V) sodium azide. This antibody is purified through a protein A column, followed by peptide affinity purification.

Storage

Maintain refrigerated at 2-8°C for up to 2 weeks. For long term storage store at -20°C in small aliquots to prevent freeze-thaw cycles.

Precautions

ATRN Antibody (N-term) is for research use only and not for use in diagnostic or therapeutic procedures.

ATRN Antibody (N-term) - Protein Information**Name** ATRN**Synonyms** KIAA0548, MGCA**Function** Involved in the initial immune cell clustering during inflammatory response and may

regulate chemotactic activity of chemokines. May play a role in melanocortin signaling pathways that regulate energy homeostasis and hair color. Low-affinity receptor for agouti (By similarity). Has a critical role in normal myelination in the central nervous system (By similarity).

Cellular Location

[Isoform 1]: Cell membrane; Single-pass type I membrane protein [Isoform 3]: Secreted

Tissue Location

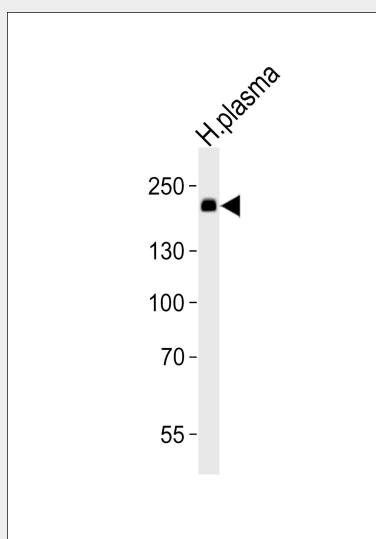
Isoform 2 is detected in plasma (at protein level). Expressed and secreted by activated T-lymphocytes. Expressed at low to moderate levels in peripheral blood leukocytes, spleen, lymph node, tonsil, bone marrow and fetal liver. At very low levels found in thymus. Isoform 2 is the major isoform in peripheral blood leukocytes

ATRN Antibody (N-term) - Protocols

Provided below are standard protocols that you may find useful for product applications.

- [Western Blot](#)
- [Blocking Peptides](#)
- [Dot Blot](#)
- [Immunohistochemistry](#)
- [Immunofluorescence](#)
- [Immunoprecipitation](#)
- [Flow Cytometry](#)
- [Cell Culture](#)

ATRN Antibody (N-term) - Images



Western blot analysis of lysate from human plasma tissue lysate, using ATRN Antibody (N-term)(Cat. #AP20826a). AP20826a was diluted at 1:1000. A goat anti-rabbit IgG H&L(HRP) at 1:10000 dilution was used as the secondary antibody. Lysate at 35ug.

ATRN Antibody (N-term) - Background

Involved in the initial immune cell clustering during inflammatory response and may regulate chemotactic activity of chemokines. May play a role in melanocortin signaling pathways that regulate energy homeostasis and hair color. Low-affinity receptor for agouti (By similarity). Has a

critical role in normal myelination in the central nervous system (By similarity).

ATRN Antibody (N-term) - References

Tang W.,et al.Proc. Natl. Acad. Sci. U.S.A. 97:6025-6030(2000).
Duke-Cohan J.S.,et al.Submitted (NOV-1998) to the EMBL/GenBank/DDBJ databases.
Ota T.,et al.Nat. Genet. 36:40-45(2004).
Deloukas P.,et al.Nature 414:865-871(2001).
Duke-Cohan J.S.,et al.J. Biol. Chem. 270:14107-14114(1995).